

## Hearing Loss Survey

There are several warnings of hearing loss. If three of the following statements are true, a hearing test is strongly recommended:

- I frequently ask people to repeat themselves.
- I need the radio or TV volume higher than family members do.
- I avoid groups because I don't hear well.
- I have difficulty understanding people on the telephone.
- I try to avoid small talk at family gatherings.
- I notice that background noise seems to drown out voices.
- I find it necessary to watch people with whom I am speaking.
- I am bothered by loud sounds.
- I have arguments with family members because of my hearing.
- I guess what people say and often am wrong.
- I have trouble understanding unexpected speech or rapid speech.
- I complain that people do not talk clearly.
- I cannot easily locate the source of sounds.
- I have ringing or other sounds in my ear(s).

## Locations

1. **West End Office**  
3450 Mayland Court  
Richmond, Virginia 23233
2. **Midlothian Center**  
161 Wadsworth Drive  
Richmond, Virginia 23236
3. **Hanover Office**  
7485 Right Flank Road, Suite 210  
Mechanicsville, Virginia 23116
4. **Virginia Ear, Nose & Throat Surgery Center**  
402 Westhampton Station  
Richmond, Virginia 23226

For an appointment please call:

**(804) 484-3700**



**VIRGINIA  
EAR NOSE & THROAT  
Associates**

Pediatric & Adult Otolaryngology  
Otology & Neurotology  
Sinus & Nasal Treatment  
Voice, Speech & Swallowing Disorders  
Sleep Apnea & Snoring Treatment  
Facial Plastic & Reconstructive Surgery  
Allergy Testing & Treatment  
Total Hearing Care  
Medical Skin Solutions

For more information visit:

**VirginiaENT.com**

## Hearing Evaluation & Management



**TOTAL HEARING CARE**  
At Virginia Ear, Nose & Throat Associates

---

## Total Hearing Care

Total Hearing Care is the Audiology Division of the medical practice Virginia Ear, Nose and Throat Associates. At Total Hearing Care, audiologists (hearing healthcare professionals) work closely with ear, nose and throat doctors (otolaryngologists/ENTs) to ensure every patient's hearing loss is managed in the most effective manner — medically, surgically or with traditional amplification.

---

## What causes hearing loss?

Like a fingerprint, hearing loss is unique for each individual. Contrary to popular belief, hearing loss is not only found in older adults, but affects over 30 million Americans of all ages and walks of life. Hearing loss ranges from mild to severe and typically develops from:

exposure to loud noise • illnesses  
head injuries • family history/genetics  
certain diseases • aging • congenital defects  
certain medications • infection

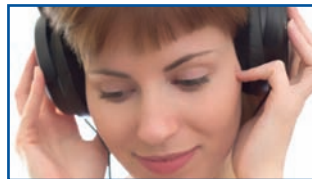


## Why consult an audiologist?

Audiologists have extensive education and specialized training in prevention, assessment and management of hearing loss. They are the most qualified professionals to:

- Conduct specialized hearing assessments for infants, children, and adults
- Perform evaluations for balance or dizziness
- Refer for medical treatment of hearing loss
- Recommend and provide hearing aids, assistive listening devices and personal alerting devices
- Educate patients and their loved ones on ways to live easier with hearing loss
- Provide information on prevention of hearing loss
- Make custom ear molds and protection

## How is hearing assessed?



A hearing evaluation is simple and painless and may take as little as 30 minutes. The audiologist begins with an inspection of

the outer ear and limited wax removal if needed. This is followed by a hearing test conducted in a sound-treated room, then an inspection of the middle ear for signs of medically related hearing problems, such as fluid in the ear or swimmer's ear.

If a hearing aid is indicated, the audiologist will recommend and dispense the best type of amplification for the specific hearing loss. If a medical problem is suspected, the patient is referred within the practice to an ENT doctor for further evaluation and treatment. This is a medically comprehensive approach and a convenience for patients not found in ordinary hearing centers.

## How is sound amplified?

### Digital Technology

Today, digital technology is used in hearing aids to process sound more quickly and efficiently. Audiologists can now fine-tune aids to improve hearing in both noisy and quiet environments. The most important feature of digital hearing aids is the ability to make adjustments if hearing loss changes, adding to the life of the hearing aid.



Photo courtesy of Phonak

### More Hearing Aid Features

In addition to the technological advances, a wide range of hearing aid options exist — some barely noticeable in size. In fact, some hearing aids resemble the ear pieces used with cell phones and digital music-playing devices.

### Assistive Listening Devices

Your audiologist may also recommend an assistive listening device or personal alerting device. Either can be used alone or in addition to a hearing aid to amplify the sounds of daily activities. Talking on the telephone, watching television, attending a concert, or visiting a friend can be significantly more enjoyable by using these specialized devices.